

BEFORE YOU BEGIN

WARNING: Real marble is fragile and should be handled at all times with utmost care.

The colour of the veins in the marble are naturally weaker points in the structural integrity of the stone.

Always hold the marble vertical, taking care to support it with a 2 person lift at all times during installation.

AFTERCARE INSTRUCTIONS

Though the marble countertops have a high quality sealing finish, chemical liquids such as nail polish must be avoided as they may stain the surface.

The marble countertop is a natural stone material and therefore every piece will have a unique grain.

We recommend the regular use of a natural stone sealer to maintain the marble surface.

Excessive exposure to water will deteriorate the furniture. Wipe away any water splashes or condensation after use.

All bathrooms should be well ventilated. If necessary we recommend the installation of a suitable extractor fan.

Clean the countertop and furniture unit with a soft lightly damp cloth only.

CUSTOMER SERVICE

t: +44(0)208 686 5100

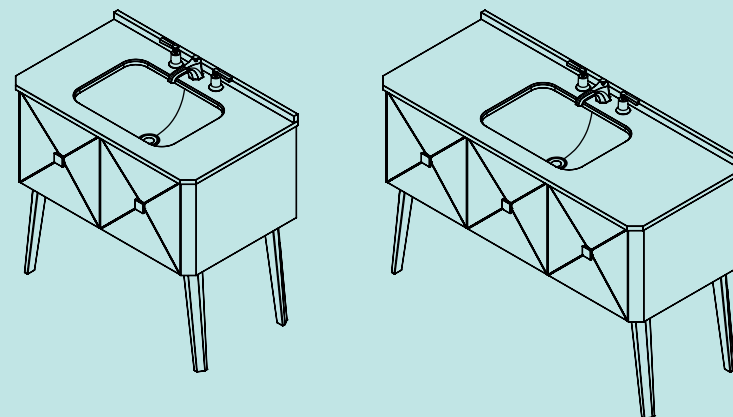
e: technical@saneux.com

4 Imperial Way
Croydon CR0 4RR

www.saneux.com

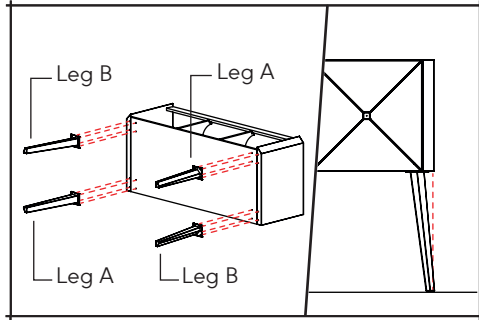
REGENCY

INSTALLATION INSTRUCTIONS

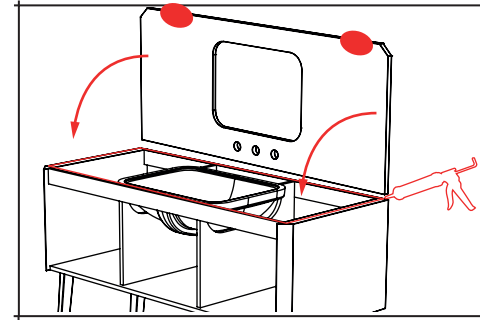


RE090F - RE130F

saneux

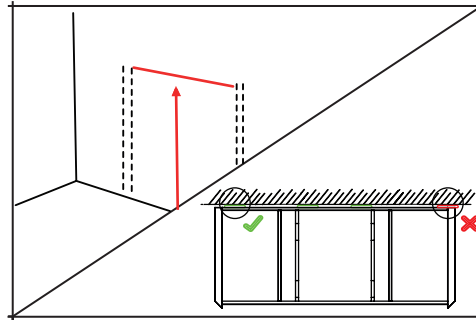


Furniture Installation.
Carefully place the carcass on its back. Assemble the legs to the unit using the screws provided. The legs are labelled A or B. When looking from the front, the legs should be angled to the outside. Make sure to assemble the legs so that they don't protrude beyond the width of the unit.

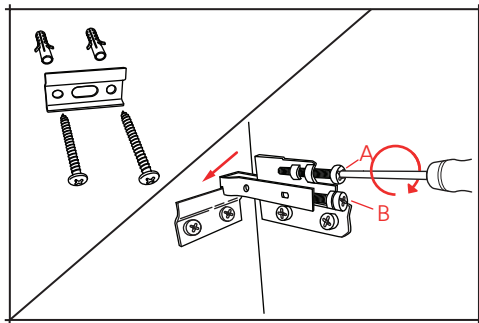
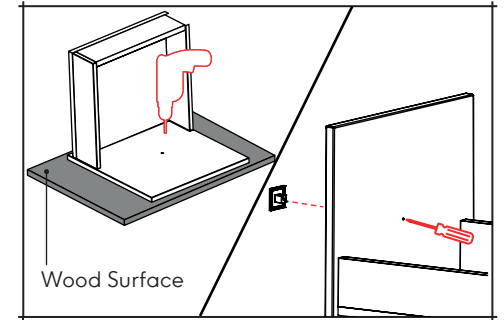


The underside of the countertop and the top side of the basin must be clean and dust free at this point. Thoroughly apply a layer of silicone adhesive to the top faces of the carcass. Carefully place the marble worktop on the carcass, making sure it aligns correctly with the back and sides. **If installing a 130cm unit, rest the basin on the carcass supports before securing the countertop down.**

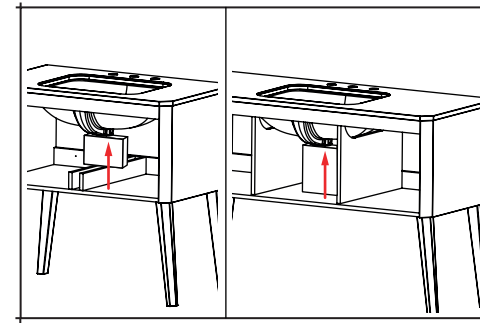
Mark the location of all mounting plates ensuring that they are positioned on the inside the unit. 130cm units require 4 plates. 90cm units require 2 plates.



Rest the drawer front on a hard surface and drill through the pilot holes on the front panels, making sure not to damage the painted surface. Assemble the handles to the front panels using a screw driver. The screws for the HDL08 Oslo handle come in the fixings bag found in the carcass

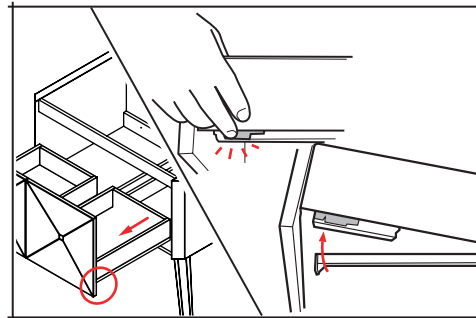


Make sure that there are no hidden pipes or cables in the wall. Drill 2 holes per mounting plate with a 8mm drill bit to a depth of 55mm. The fixings supplied are for solid walls. For hollow or stud walls use specialist fixings. Locate the hangers onto the wall mounting plates. Screw A adjusts the height. Screw B adjusts the depth.



Offer the basin to the countertop and measure the height between the base of the carcass and the bottom of the basin. Prepare a timber block to hold the basin in place. Generously apply silicone adhesive to the top faces of the basin and place it in its position, supported by the timber block so the basin is tight against the countertop. **Allow the silicone to cure for 24H before removing the block.**

The unit should be checked at this point to make sure it is fully level. Remove all drawers from the carcass. To do this, fully extend each drawer. Under either side of the drawer are two plastic clips that can be pushed inwards to release the drawer from the runners.



Make all plumbing connections and check for leaks. We recommend a WA005 low profile waste. Return the drawers to their respective guides. To adjust the front panel remove the cover cap on the inside drawer. **Screw A adjusts the depth. Screw B secures the position. Screw C adjusts the width.**

